

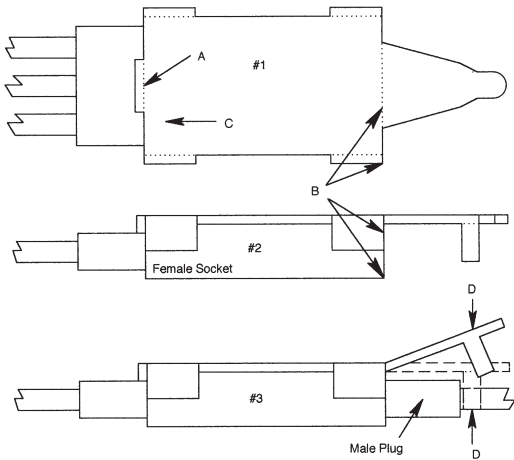
“Nifty Keeper” Sot265

INSTRUCTIONS FOR INSTALLATION.

Stop, there are a few non-standard size plug & socket sets in our hobby. A simple test will detect them and our instructions will correct for them.

Before installing the plug & socket Nifty Keeper, check it for proper fit and location on the female socket using the following guide lines.

Hold the Nifty Keeper on top of a female socket as shown on the drawings #1 and #2.



Tab “A” must be at the back of the socket.

The front edge of leg “B” should align itself with the face of the female socket. If these two items don’t align properly, slide the Nifty Keeper in the direction of arrow “C” until the edge of leg “B” is in the corrected location. This is now the correct position for your Nifty Keeper’s installation.

The Nifty Keeper is installed using a drop of CA adhesive** on the top of the female socket in either the normal position or the adjusted position.

After it’s secured in place and the adhesive is cured, insert the male plug.

The tang on the Nifty Keeper will spring up to allow the plug to pass under it. This spring action allows for both installation and removal of the plug. See #3 drawing for a reference.

After installation of the plug into the socket, using your thumb and index finger, a little squeeze will insert the tang teeth behind the male plug and straddle the center wire in the servo cable.

The installation of a Nifty Keeper will keep the plug and socket together under most all vibration levels, however, it can disengage in the event of a crash possibly avoiding servo cable damage.

**Use your favorite CA adhesive for plastics or Goop Adhesive. A number of good adhesives are available in our hobby shops.

Sonic-Tronics
7865 Mill Road
Elkins Park, Pa 19027 USA
Phone: 215 635-6520
Fax: 215 635-4951
Email: info@sonictronics.com
www.sonictronics.com